

FIBERBOARD SHEATHING



A proven, economical way to build strong, energy efficient walls.

Provides Corner Bracing

- No supplementary corner bracing is required by the four model building codes* when structural grade fiber board sheathing panels, 1/2" or 25/32", are applied vertically.

* Some local jurisdictions may require it.

Ideal for Any Siding

- Fiberboard sheathing is easy and economical to install with hardboard, wood or any other siding material.
- No fear of crushing when staples or nails are driven securely.

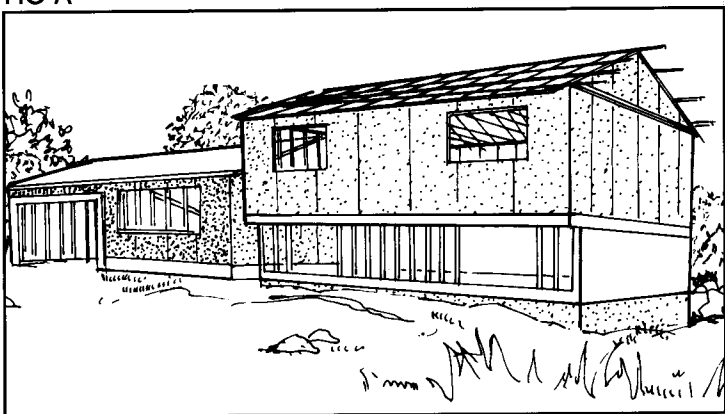
Durable

- Stands wear and tear involved in handling prefabricated wall sections.
- Doesn't break easily. Less waste.
- Not adversely affected by weather or sunlight.

Insulates

- Saves energy and money.

FIG A



Reduces Noise

- Offers more sound transmission resistance than most sheathing materials.
- When used with sound deadening board and gypsum wall board, outside walls become excellent sound barriers against outdoor noises.

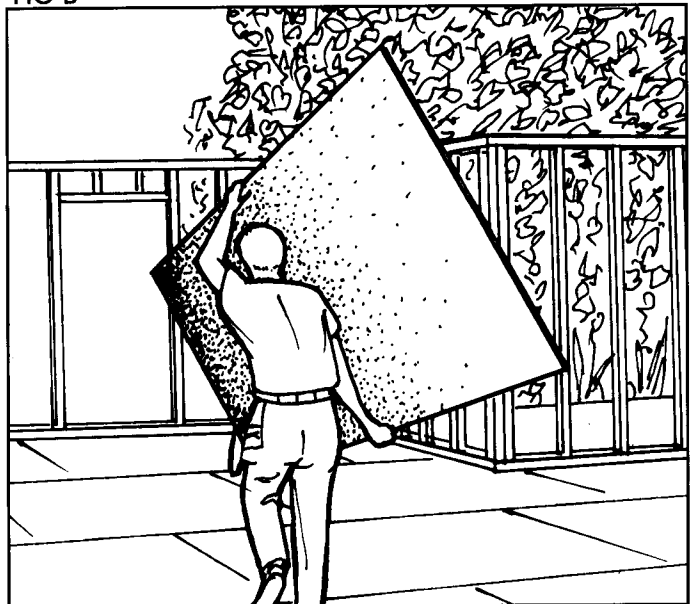
Controls Vapor

- Water repellent and forms a weather-tight cover for walls.
- Eliminates the need for building paper with most sidings.
- Sufficient permeance permits unwanted vapor to escape outward through sidewalls-one of the few sheathing products available with this permeance advantage.

Applies Easily

- Rapid and efficient application with nails or staples.

FIG B



INSTALLATION INSTRUCTIONS

1/2" Regular and 1/2" and 25/32" Structural sheathing can provide racking strength when applied over studs 16" o.c., and nailed as described in the application portion of these instructions. However, specific racking resistance requirements will be determined by local building codes. Both regular and structural sheathing do not need to be covered with building paper unless required by building codes. A continuous vapor retarder (6mil polyethylene film) must be applied on the warm side of the perimeter wall framing members.

SIZES

Regular sheathing is available in nominal 1/2" x 4' x 8', 4' x 9' and 4' x 10' square edge sheets. Structural sheathing is available in nominal 1/2" and 25/32" thickness and 4' x 8' and 4' x 9' square edge.

TABLE I

PROPERTIES	Typical R-value*	Vapor Permeance (perms)
1/2" Regular Sheathing	1.32	5.0 ave. min.
25/32" Structural Sheathing	2.06	5.0 ave. min.
1/2" Structural	1.22	5.0 ave. min.

* The higher the R-Value, the greater the insulating power.

PRODUCT STANDARDS

Applicable product standards are ANSI/AHA A194.1 and ASTM C208

APPLICATION

Sheathing should be applied vertically with the long edges parallel to the vertical studs. Center all joints over the framing members with a 1/8" gap between edges. Leave a 1/2" gap at the doors and windows. Sheathing should extend from sill to top plate. If not, headers for adequate nailing should be provided at all horizontal joints.

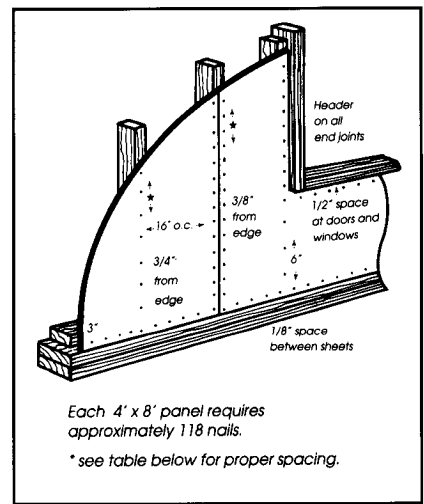
TABLE III

For structural applications use the following fastening schedule to take advantage of shear values for sheathing

Allowable Working Shear Stress for Wind or Seismic Forces On Vertical Shear Walls with Fiberboard Sheathing^{1,2,3,6}

Thickness and Grade	Fastener Type	Shear Stress (plf of wall)		
		Perimeter Spacing ⁴		
		2"	3"	4"
1/2" Regular	*5	*5	*5	*5
1/2 Structural	8d common nail or 11 ga.			
	galv. roofing nail, 1 1/2" long, 7/16" head	260	230	170
	7/16" crown, 16ga. galv. staple, 1 1/8" leg	225	200	150
	1" crown, 16 ga. galv. staple, 1 1/8" leg	340	300	230
25/32" Structural	8d common nail or 11 ga.			
	galv. roofing nail, 1 3/4" long, 7/16" head	270	240	180
	7/16" crown, 16ga. galv. staple, 1 1/2" leg	220	200	150
	1" crown, 16 ga. galv. staple, 1 1/2" leg	325	290	220

FIG C



Each 4' x 8' panel requires approximately 118 nails.
* see table below for proper spacing.

TABLE II

For Non-Structural applications the following fastening schedule should be used.

SHEATHING

	Fastener Size	Non-Structural Spacing	
		Edges	Field
1/2" Regular	1 3/4" nail**	6"	12"
1/2" Structural	1 3/4" nail**	6"	12"
25/32" Structural	2" nail**	6"	12"

** See local building code. Staples may be used in lieu of nails.

Additional product details may be obtained from:

EMCO Limited Building Products
LaSalle, Quebec Canada
(514) 364-1387
FAX: (514) 364-4487
bric@emcoltd.com
John W. Ricketts, President

IKO Industries, Ltd.
Calgary, Alberta Canada
(905) 457-5321
FAX: (905) 450-3620
andy.lodge@iko.com
Andy Lodge, R&D Manager

International Fibreboard, Inc.
Winnipeg, Manitoba Canada
(204) 654-0555
FAX (204) 654-0606
ifi@mts.net
Mark Smerchanski, President

Materiaux Cascades, Inc.
Louisville, Quebec Canada
(800) 561-4279
FAX: (819) 228-2845
msmith@cascades.com
Michel Smith, Plant General Manager

Georgia-Pacific Corporation
Atlanta, GA
(800) 879-7781
FAX: (404) 230-7712
reslate@gapac.com
Rod Slate, Sales Manager

International Bildrite, Inc.
International Falls, MN
Sales Office
(763) 509-9926
MILL FAX: (763) 283-3905
RTB11625MPLS@aol.com
Bob Boyer, Sales Manager

Masonite Corporation
Chicago, IL
(800) 257-7885
FAX (312) 750-1233
nick.pavlovich@ipaper.com
Nick Pavlovich, Sales & Marketing Manager - Industrial Products

Temple
Diboll, TX
(800) 231-6060
FAX: (800) 426-7382
gkeeling@temple.com
Gary Keeling, Product Manager